

TECH Information

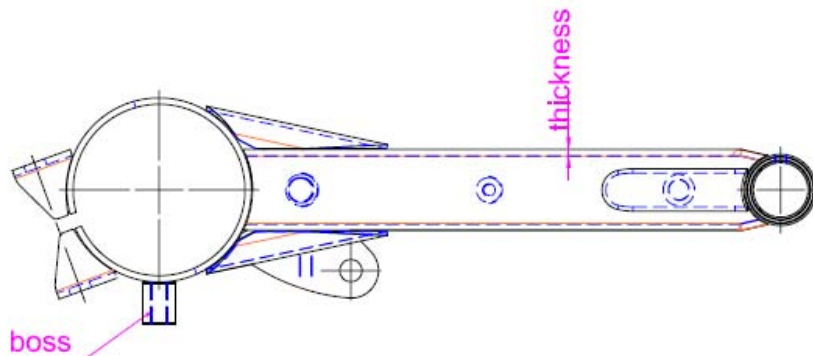
Date: : 2008/9/15

Page: 1/1

Object: : Improvement of Swing Arm

We had got information about swing arm, it could get break on square tube when bike gets the heavy jump. Therefore we will improve the swing arm as following items. Please kindly refer the following drawing.

1. Thickness of square tube, the original is 2mm and we will use 3mm for new production. The improvement will get solution even bike gets heavy jumping.
2. The boss of swing skid plate, we will not welded the boss on swing arm because the welded of boss will get trouble on production. The circle tube could be deformed, when the bosses are welding and get heat. Due to this revised, we will offer the stay as picture. Please kindly make reference.



APEX Motor
Robert